



Welcome to Lyndon School Careers Convention 2025

Broaden horizons

Build confidence

Explore new skills

Lyndon Learner Journey

Cultivating strong roots of character, supporting a robust academic trunk and fostering flourishing branches of experiences.



Our learners are well prepared to navigate the complexities of life and achieve their full potential.



The Branches

Flourishing with Experiences and Growth

Extending from our solid academic core are enriching experiences that support personal growth and development.

The Trunk

A Strong Academic Curriculum

Our academic curriculum is the trunk of our tree, providing the structure and support necessary for all learners to thrive.

The Roots

Lyndon Character Virtues

These virtues are the foundation upon which all other aspects of learner development is built; Altruism, Curiosity, Integrity, Compassion Resilience and Resourcefulness.

Broaden horizons

Build confidence

Explore new skills

Consistently achieving strong outcomes for all learners

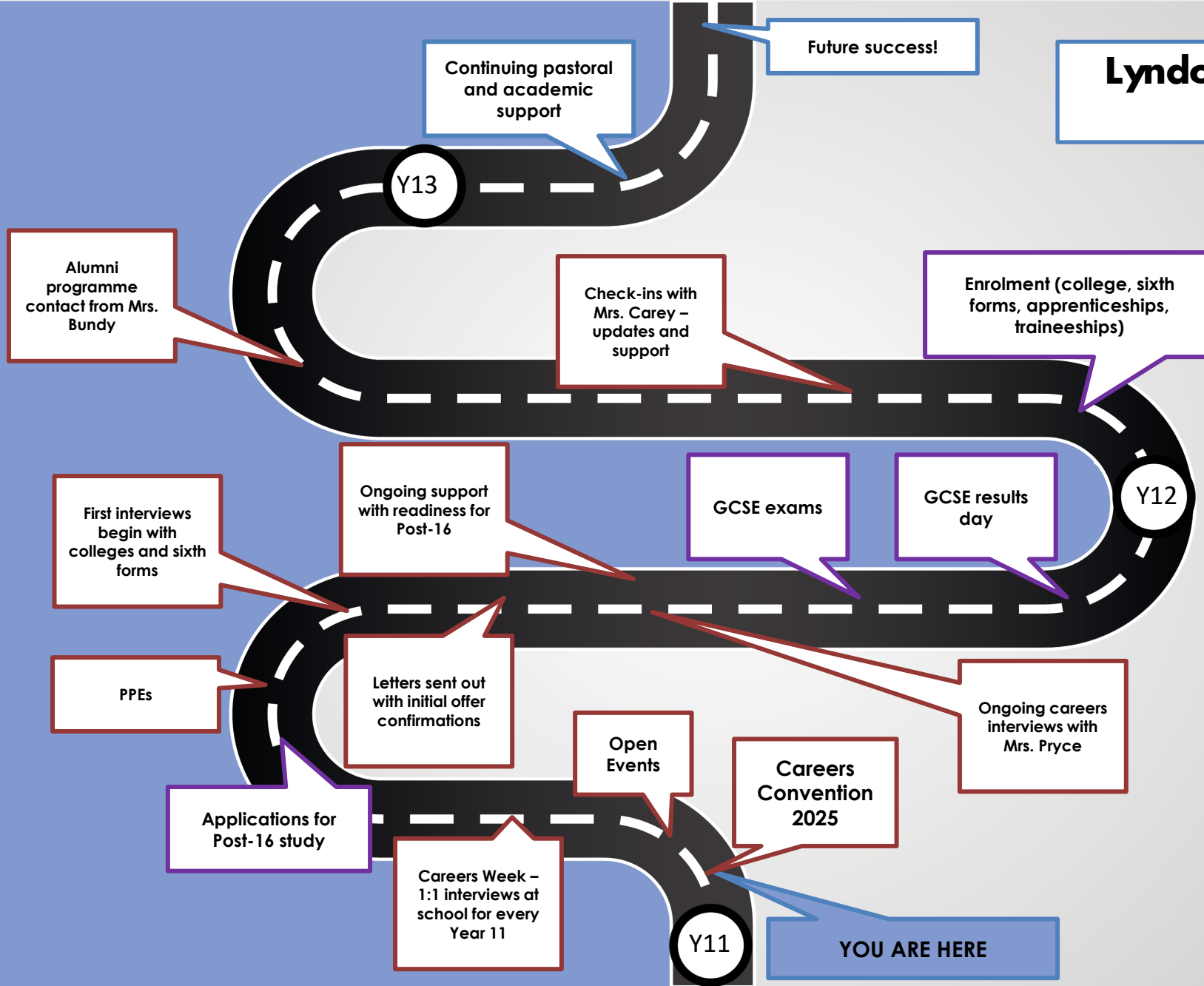
The best ever results across the EBacc – English, Maths, Science, Geography/History and Languages

Highest number of top grades ever and an increase in the number of learners who got 7+ in ALL their subjects

Our best attainment results ever!



Lyndon School Post-16 Roadmap



Broaden horizons

Build confidence

Explore new skills

Expectations for E.E.T.

- Learners are still required to stay in full time education or gain an apprenticeship / employment combined with part time training until they are 18
- Maths and English must be re-sat at college for any learner scoring less than a grade 4
- College re-sit pass rates are about 35%

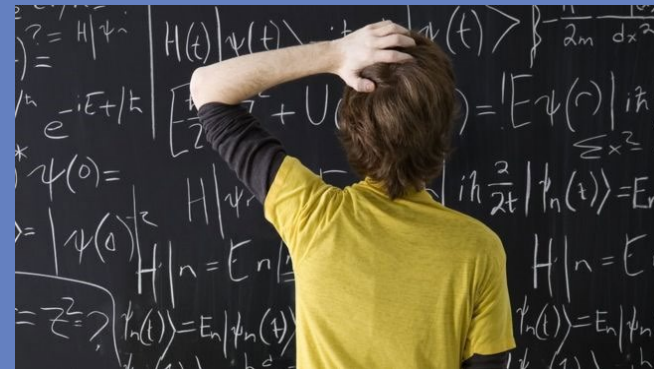
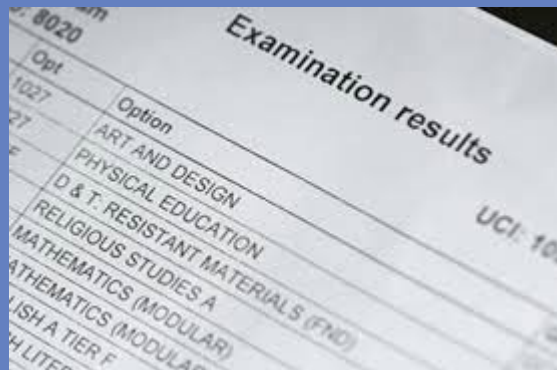
Post 16 Options

- A Levels
- BTECs (Level 1, 2, 3) and T-Levels
- Apprenticeships and Pre-Apprenticeships
- Traineeships
- Employment with training



Entry Requirements

- Each college / provider will have their own entry requirements so it is important to check these out with them.



General A-level or Level 3 entry requirements

- Minimum requirement of five grade 9 – 4 at GCSE, including English and Maths, to study at Level 3.
- Most providers will expect a level 5 or above in English and Maths.
- Many providers will expect learners to have some grades at 6 or above, usually in the subjects they wish to study or if the subject is oversubscribed.
- If you have GCSEs at grade 4 and above, you already have Level 2 qualifications – you should only be looking to study additional Level 2s at College if you have never studied it before (such as Automotive Engineering).

9		
8		A*
7		A
6	GOOD PASS (DfE) 5 and above = top of C and above	B
5		
4	AWARDING 4 and above = bottom of C and above	C
3		
2		D
1		E
		F
		G

What next?

- Learners can use our careers software called **Unifrog** to help them research different careers and courses. Learners used this platform last year for their work experience, so know their own logins.
- Learners should attend as many **college open events** as possible.
- **Apply early** as some colleges and sixth forms can get over-subscribed. The earlier learners apply, the earlier they receive interviews and an offer of a place.
- **Have a back up** - apply to more than one college.

Apprenticeships

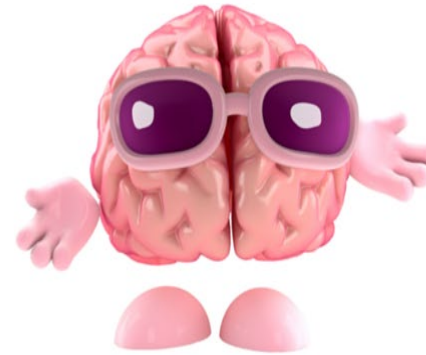
- A job with a wage, minimum £7.55 per hour (as of April 2025).
- Day release to a training provider or college, usually to participate in Level 2 or Level 3 qualifications.
- Go to <https://www.gov.uk/apply-apprenticeship> for more information and to register.
- Create a profile and be aware that employers advertise when right for them, not at key points in the school year.
- Have a back-up plan – apprenticeships are **HIGHLY** competitive – at Level 2, there are significantly more applicants than available apprenticeships - so learners should also apply for a college course as a back-up.

Thinking of University?

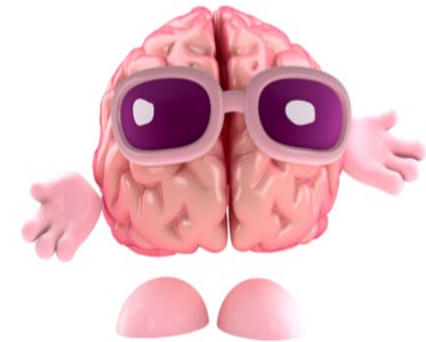
- If learners wish to go to university or onto degree-level apprenticeships after taking Level 3 qualifications, review the entry requirements for the type of degree they wish to take at www.ucas.ac.uk or on Unifrog as this will help them to decide on which Level 3 courses to consider.
- If learners are unsure of what they want to do then choose subjects they enjoy and are good at as inspiration may come later!
- Keep options open – doing something very specific is sensible if learners know what they want to do but less sensible if they don't!

Have a 'Growth Mindset'

I can't do this!
I don't have
the talent!



I may not be
able to do this
now, but with
time and effort
I'll be able to!



Attend and Achieve

These students are In Year 8 and have 90% attendance.

Is that good? What does this mean?

They think this is pretty good and so do their parents.

Are they right?

90% attendance = $\frac{1}{2}$ day missed every week!!

(Would a boss like their employee to be off work this much??)

That's practically part time!

Put another way: 1 year at 90% attendance = 4 whole weeks of lessons MISSED!



What impact may this have on a student's life....?

Research suggests that **17 missed school days a year = GCSE grade DROP in achievement.**

The higher the attendance, the greater the achievement.

If you can **improve your attendance by 1%** you may well see a **5-6% improvement in attainment** (Department for Education and Skills).

Please help yourself by ensuring your attendance remains **above 95%**, allowing you to achieve your potential!

What could your potential earnings look like?



Who can your child see for advice and guidance?

- Mr Kelly or Mrs Carey.
- Your son/daughter's Tutor.
- Mrs Page – Year 11 Pastoral Manager.
- Mrs Pryce – Careers Advisor, based in school.
- Unifrog.

Learners should look out for:

- Careers Interview during this year
- College Open Days from September onwards
- Solihull Apprenticeship and Pathways Show: **22nd October**, 3.30pm – 7pm
- Applications Day: **5th November**
- Mock Assessment Centre Activity: **20th January**, 2pm-4pm
- Virtual work experience opportunities this year
- Real-life work experience opportunities once you've finished your exams and have officially passed your final day at Lyndon
- Careers and education pathway information on Unifrog.



Solihull
Sixth Form
College
SUMMIT LEARNING TRUST





RESULTS SUCCESS 2025

1441 A*/A grades at A level and Distinction*/
Distinction grades on BTEC and T level

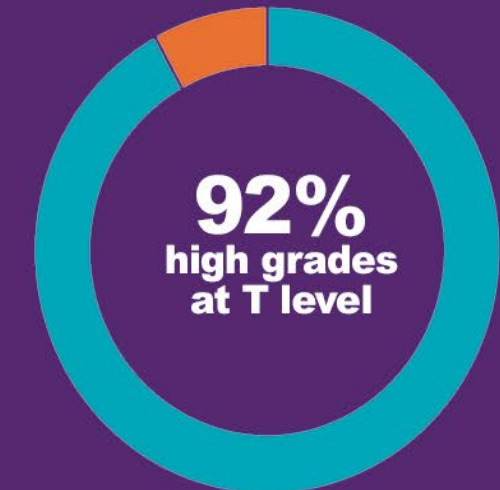
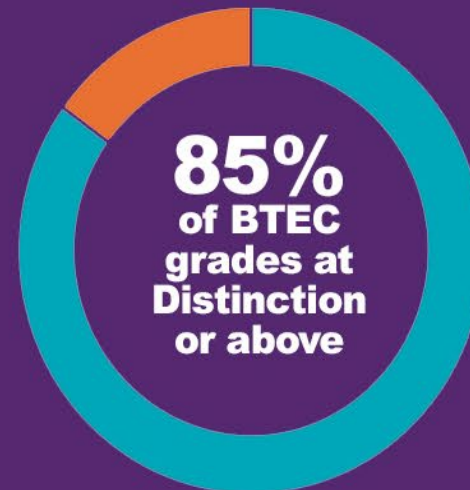
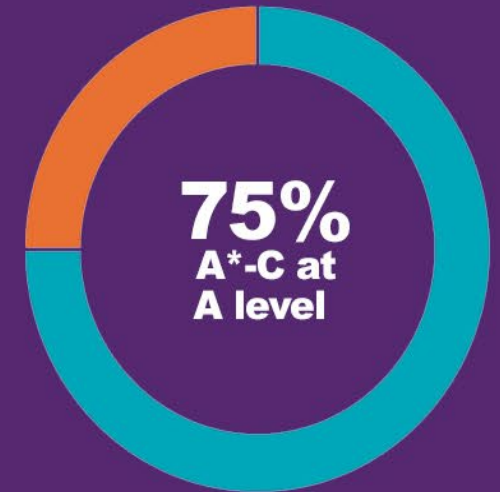
37 courses with 100% pass rate

More than 250 students accepted by Aston and
140 by University of Birmingham

50+ students have progressed to Oxbridge and
Medical degrees in the last 3 years



Preparing Tomorrow's
Professionals



99% Pass rate across all College courses

Our Courses

A levels (and equivalent courses)

Accounting

Applied Science *

Art & Design (Fine Art)

Art & Design (Graphics & 3D Design)

Art & Design (Photography)

Biology

Business

Chemistry

Computer Science #

Computing: Application Development * #

Criminology *

Drama

Economics

English Language

English Literature

Film Studies

French

Further Maths

Geography

Geology

German

Health & Social Care *

History

Information Technology *

IT: Data Analytics *

Law

Mathematics

Media Studies

Medical Science *

Philosophy

Physics

Politics

Psychology

Religious Studies

Spanish

Sociology

Sport *

Statistics

* These courses are equivalent in size to one A level and can be studied as part of an A level programme.

Computer Science and Computing: Application Development cannot be taken together due to overlap

Our Courses

BTEC National Diplomas:

Each of these courses are equivalent to studying 2 A levels and can be studied alongside 1 A level or equivalent course.

- ▶ Business
- ▶ Creative Digital Media Production

Applied Pathways:

Each of these courses are equivalent to studying 3 A levels.

- ▶ Applied Science
- ▶ Art & Design
- ▶ Business
- ▶ Education & Early Years (T level)
- ▶ Health & Social Care
- ▶ IT
- ▶ Sport



A level Entry Requirements

▶ **Standard 3 A level Programme:**

- At least two grade 6s at GCSE.
- At least a further three grade 4s at GCSE.
- You should have at least a grade 4 in **BOTH** GCSE English Language **AND** Mathematics.

▶ **4 A level Programme:**

- At least five grade 7s at GCSE.
- You should have at least a grade 6 in both GCSE English Language and Mathematics.

Please note that there may be additional entry requirements specific to particular courses - please check each course listing on our website carefully to ensure you understand these entry requirements.

BTEC/T level Entry Requirements

▶ BTEC National Diploma (2 A level equivalent):

- At least two grade 6s at GCSE.
- At least a further three grade 4s at GCSE.
- You should have at least a grade 4 in **BOTH** GCSE English Language **AND** Mathematics.

▶ Applied Pathways (3 A level equivalent):

- At least two grade 6s at GCSE or merits on equivalent courses
- At least a further three grade 4s at GCSE or equivalent, including at least grade 4 in GCSE English Language **OR** Mathematics, with at least grade 3 in the other one. Students who have a grade 3 in one of these two key subjects will be required to retake this GCSE in addition to the Applied Pathway.

▶ T Level (3 A level equivalent):

- At least two grade 6s at GCSE or merits on an equivalent course
- At least a further three grade 4s at GCSE or equivalent
- **BOTH** GCSE English Language **AND** Mathematics at grade 4 or above. Students wishing to move into teaching in the future also require at least a grade 4 in GCSE Science.

Key Dates

Open Day

Saturday 18 October 2025

9.30am – 3.30pm

Last entry at 2.30pm

Open Evening

Wednesday 26 November 2025

5.00pm – 8.00pm

Last entry at 7.30pm

Open Evening

Thursday 22 January 2026

5.00pm – 8.00pm

Last entry at 7.30pm

Spring Talks & Tours

Thursday 5 March 2026

5.00pm – 7.00pm

By appointment only

In all cases, all students must be accompanied by a parent/guardian. Booking is essential – Eventbrite timed entry tickets available online 4 weeks before each event.



Applying

Read about our courses at www.solihullsfc.ac.uk.

Apply online (via the Applying section of the website). Applications will open in mid-October and the deadline to apply is 31 March.

We will get references from schools. We will invite students into College for an interview and make an offer if they look likely to meet our entry requirements.

Everyone with an offer will be invited to Welcome to College Day in early July. Students will enrol in in late August.





Solihull College & University Centre

https://www.canva.com/design/DAFwGs8bVic/t5zxa874t2tARCWzDjQ1PA/edit?utm_content=DAFwGs8bVic&utm_campaign=designshare&utm_medium=link2&utm_source=sharebutton

Thank You

This presentation and additional information advice and guidance will be available via our website.



Broaden horizons

Build confidence

Explore new skills