

Message from the Principal

A very warm welcome back to school to all our learners and their families.

Following the publication of the provisional 2023 GCSE results in August, we are pleased to say that the school's improvement journey has continued across many areas of the curriculum. When compared with the previous comparable cohort - our latest provisional results show that:

Our learners made better progress than their peers nationally using their best 8 subjects.

The number of learners achieving either a strong or standard pass in English and Mathematics continues to improve strongly with 2023 breaking all previous records.

Learners that required additional support both academic and pastoral made better progress than their peers nationally – building on our previous all-time high.

The percentage of learners achieving the EBacc qualification at both a good and standard pass has risen significantly from 2019.

The percentage of learners securing a positive destination remains close to 100% for the fifth consecutive year.

These results are testament to the hard work that was put in by learners and colleagues and demonstrates that Lyndon continues to provide an excellent education to the young people who attend this school.

Learners leaving during the school day

If your child needs to leave school during the school day for an appointment, please send your child with the appointment letter or a note to excuse them from lesson saying what time they have to leave lesson and to show at reception. Could you also please state on the note whether your child is leaving on their own or you are meeting them in reception. Please remind your child to remember to make their way down to reception at the time you have asked them to.

Learners who feel unwell during the school day

Please remind learners that if they feel unwell during the school day, they must visit First Aid or their Pastoral Manager to contact home.

Learners must not call home using their own mobile phones.

Equipment/PE kits

Reminder, it is the learner's responsibility to remember their equipment and we cannot always guarantee we can loan items to learners or send equipment to them during the school day.

Open Evening/Days

Our open evening and mornings were a great success with over 1000 visitors attending to take a look around and see what we have to offer.



World Space Week

Learners at Lyndon School, part of the Summit Learning Trust, celebrated World Space Week, which is an international celebration of science and technology, and their contributions to our lives. The United Nations General Assembly declared in 1999 that World Space Week will be held each year from 4th-10th October. This year's theme for World Space Week was 'Space and Entrepreneurship'.

At Lyndon, we are keen to develop cross-curricular links and enhance learners' experiences, underpinned by our knowledge-rich curriculum. Activities this year involved a space-themed Science Club where KS3 learners designed and launched parachutes. Within tutor time, the focus is on the space economy, focusing on 'Astra' and the economics of rocket launching. The current global revenue from space-based business is around £316 billion, with predictions suggesting this will grow to trillions of pounds. We recognise that the UK industry is in search of more space scientists, and we want to inspire the next generation by showcasing the careers that are available to them in the industry.

Furthermore, literacy is at the heart of our curriculum and we have developed active reading strategies this academic year that are linked to the current waves and atmosphere topics. Within World Space Week, comprehension tasks focus on how waves are used for communication; their role in monitoring greenhouse gases and glaciers; and observing air pollution. As a school, we are also celebrating Black History Month, and this is a pivotal part of our calendar every year. We will be using World Space Week as an opportunity to highlight the vital role of black women who have contributed to the sector.

Computer Club Project: Break Dance Robot

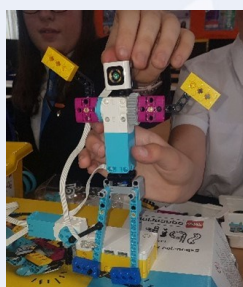
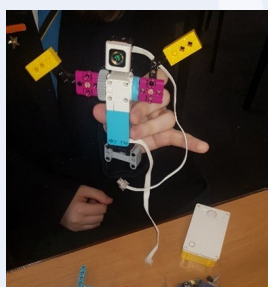
Lyndon Learners built a Lego robot that used the synchronised motor movements of a 'break dancer' to keep in rhythm with light and beats.

Syncing movement means that every move follows the rhythm. For example, everything takes one second to complete, which is often the case in music and dance.

There are various things to sync in this lesson.

Movement of the legs, movement of the arms, blinking of the pixels on the Light Matrix and different sounds and notes.

Lyndon learners built an understanding of the 'break dancer's' functionality so that they were able to program new rhythms following new beats in a short amount of time.



Lion King Theatre Trip

On Wednesday 6th September, Miss Prentice, Mr Francis and Mrs Sheldon took 30 learners to watch 'The Lion King' at Hippodrome, Birmingham.

Learners particularly enjoyed the costumes because they were very unique and bright, not only could you see the faces but when they moved a certain way, they became the character they were playing with an added mask. The acting, singing and dancing skills of the performers were amazing.

It was fantastic to see the characters of the production coming into the audience and engaging with the audience to add to the enjoyment and immerse the audience into the story even further.

For some of these learners, this was their first time at a theatre and we are very proud and fortunate to provide opportunities to learners with some of their first experiences within the Performing Arts industry.



Macmillan Coffee Morning

Parents, Carers, learners & colleagues came together to support the Macmillan Coffee morning. Lots of different variations of cakes were donated. A special thank you to the Pantrini family who donated a special 'Lyndon School cake' to raffle for such a wonderful cause.

An amazing £350.69 was raised, this exceeded previous years! Thank you for your support.

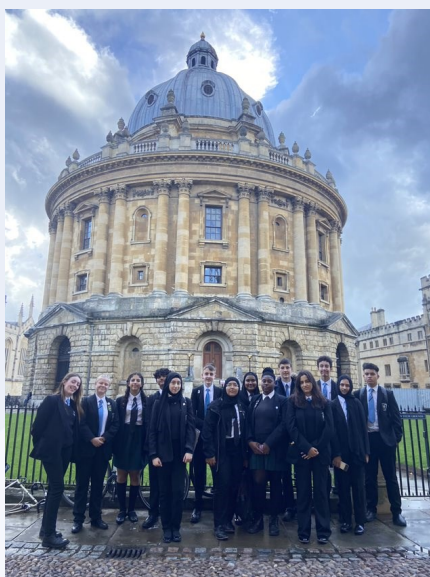
Pantry Prefects

On 22nd September, our Prefects helped Mrs O'Gorman to pack and get food boxes ready for parent/carers to collect.



Visit to Keble College

Fourteen Lyndon learners were invited to Keble College as part of their outreach programme for a taster day. They experienced a day in the life of an Oxford University learner, had a tour of the college, and a tour of Oxford. Learners enjoyed their lunch in the Great Hall and learned about the history of Keble College and how graduates of Oxford flourish



after leaving and the variety of career paths that are open to them. They have returned full of determination to focus on Year 11 examinations and what college courses await them next year.



Royal Institution

A group of Y10 learners are working with the Royal Institution and are being trained to deliver STEM classes to primary school children later in the autumn term. The project aims to develop their professional skills, leadership experience and allow them to gain valuable experience in presenting to an audience. Furthermore, they will gain a deeper understanding of the topic(s) in preparing and explaining an aspect of STEM to young children.

During the initial Ri training session that took place on the 3rd October learners were introduced to the Ri, the Masterclasses and the finer details of the project. They were given presentation skills training and put into small groups to plan and develop an activity of their choice as their STEM masterclass.



Principal's Pick of the Week

Cole Saunders & Shad Pirot, Year 8 learners were both awarded Principal's Pick of the week for their outstanding support to Parent/carers and colleagues during Open Evening.



Megan Hendrik, Year 10, nominated by Miss Brogan for brilliant and creative market research homework in Business Studies.

World Restart at Heart

Monday 16th October marked 'World Restart a heart day', which was an opportunity to highlight this important life skill. Learners at Lyndon School participated in marking this annual event in line with our vision of developing well rounded, confident, and responsible individuals.



'Book Fairy' Treasure Hunt

Lyndon Library is celebrating Black History Month by running a 'Book Fairy' Treasure Hunt. Learners were able to collect a clue sheet from the library to track down two books hidden around school. The finders can read the book, then either keep it or leave it somewhere for another reader to find!



Library News

This half term, learners have really enjoyed using the library to read, study and access computers to complete homework. The library welcomes learners every day at the following times:

8.00 am-8.35am 1.00pm-1.45pm 3.00pm-4.00pm

Library Ambassadors

At the start of term, learners were invited to apply to be Library Ambassadors. Eleven Library Ambassadors were successfully appointed and are now busy at breaktimes helping to organise the library and support other learners.

Congratulations to these learners who are giving up their leisure time to help staff and their peers.

Library Clubs and Challenges

There's lots going on for learners to get involved with, including after school reading and creative writing clubs.

The times of these clubs are as follows:

Tuesdays: 3.00 - 4.00 Paperback Pals

Thursdays: 3.00 - 4.00 Pen Pals

In addition, there will be regular library challenges and competitions running throughout the year. Recently, we held a 'Guess the Library Owl' and a creative writing competition.

Here is a poem written by one of our competition winners, Georgia Greaves in Year 9:

Midnight's Watch: The Haunting Owl

In the moonlit night,
A chilling hoot.
An owl emerges,
Its presence acute.
With features of darkness,
It prowls the trees.
A creature of mystery.

Its eyes like amber orbs,
Glow with might
Piercing the darkness,
A haunting sight.
Silent wings spread wide
A harbinger of shadows
In the dead of night.
Beware the owl's call,
a sound so eerie.
A signal of danger
something to be wary.
For when the moon is full and the stars align,
the owl's presence whispers
a warning sign.

Learner' Views

Here is what some of our learners have to say about the library:

"The library is a place to go in school if you want a little peace and quiet to read or to complete homework. This month in the library we are celebrating 'Black History Month' so learners can look out for our displays of the amazing black women and men who have written brilliant books.

If you read a book, leave a review about it for the next person to see how good the book really is! Don't forget to get creative and join in with library competitions and challenges." **Head Library Ambassador, Megan Hendricks, Year 10**

"The reason I come to the library is because it is a nice calm place where I can enjoy my break and some amazing books." **Safa, Year 7**

"I come to the library because it is full of friendly people and is a good place to study and read." **Miyah, Year 8**



Library Ambassadors: Maia, Megan and Jayden.



Lyndon Charter Virtues

This half-term has signalled the launch of our commitment to character through the Lyndon character virtues; virtues being the behaviours that we want our learners to be associated with whilst at, and beyond, their time at Lyndon. These virtues are also linked to various Unicef articles which are displayed prominently around school.

Our 6 virtues are:

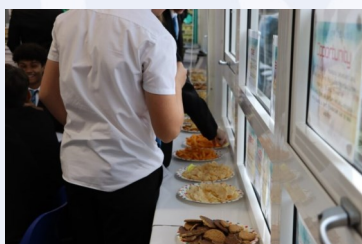
Altruism, Compassion, Curiosity, Integrity, Resilience, Resourcefulness

This half-term, we have focused on curiosity, encouraging learners to question the knowledge that they are grappling with and become more inquisitive. There have been many opportunities for learners to engage with this virtue this half-term through:

- A) Assemblies focusing on topics such as black hair as part of Black History Month and languages week and how Sparx home learning allows learners to apply the knowledge learnt in lesson and question where the areas for improvement might be in their subject knowledge.
- B) Friday Virtues – Learners having the opportunity to attend talks from the University of Birmingham on Geology and what a PhD, is to the importance of Business Studies through time.

Subject areas offered experiences including:

- 1) MFL – As part of European Languages day, a tutor quiz and bunting competition were run with learners. Delicious food was served in the canteen from different cultures allowing curious learners the opportunity to sample different foods.
- 2) Business - Learners tasted a branded product and a non branded product, rated them on appearance, taste and looks and then tried to identify the company that had made them.



- 3) Geography – Creating earthquake proof buildings out of spaghetti and marshmallows and getting learners to identify where weaknesses in building material and design could lead to an increase in the building collapse and how, based on their observations.
- D) Extra curricular – Learners attending Japanese club thereby questioning how language is structured and articulated to the sports clubs which are run by the PE department.
- E) At the end of this half-term, in each year group the top x20 learners who have earned the most praise points for consistently demonstrating curiosity around school will receive a certificate and postcard celebrating their achievement.

Next half-term, the virtue that we will be focusing on will be altruism. This looks at learners showing selflessness and concern for the well-being of others and not expecting any reward to be given back in return. Learners have already been made aware of several opportunities that will exist for them to engage with developing their experience of altruism including:

- A. ATA Ambassador program – Having a sustainable impact on modes of travel to and from school.
- B. Carol singing at Morrisons in December 2023.
- C. Bag packing at Morrisons in November 2023.
- D. Climate action group raising awareness of the actions learners can take on a grassroots level which will raise awareness of local issues affecting climate.



INFORMATION



Learners leaving during the school day

If your child needs to leave school during the school day for an appointment, please send your child with the appointment letter or a note to excuse them from lesson saying what time they have to leave lesson and to show at reception. Could you also please state on the note whether your child is leaving on their own or you are meeting them in reception. Please remind your child to remember to make their way down to reception at the time you have asked them to.

Learners who feel unwell during the school day

Please remind learners that if they feel unwell during the school day, they must visit First Aid or their Pastoral Manager to contact home.

Learners must not call home using their own mobile phones.

Equipment

Please remind learners to check their planner/timetable each day, to ensure they bring in the correct equipment for the day.

Please ensure that they have their planner, reading book, pen, pencil, ruler and full PE kit if they have PE on the day.

It is the learner's responsibility to remember their equipment and we cannot always guarantee we can loan items to learners or send equipment to them during the school day.

Attendance

Please report any absences before 8.30 am. You can leave any messages on the **absence line on 0121 743 3402.**

Please clearly state your child's name, year group and the reason for absence. Thank you.

Football boot exchange

We are arranging a football boot exchange within the PE Department to assist families in the current cost of living crisis. If you have any old football boots that are no longer required and would be happy to donate to the school, we would very much appreciate this. All used boots will be sanitised and cleaned before use.

Please ask your child to hand any donations into the PE Office. Many thanks, PE Department.

Food Bank

Lyndon School is a recognised centre to support families and individuals in crisis. There are many reasons why a family is in crisis and unable to access support to be able to buy food. We are here to help. As a registered food bank referral agency we can support a family to access food.

Sanitary Products

We are in a position to support learners who need sanitary products. They are located in the girls' toilets and are also available for any learner that wants to take products home:

Uniform Bank

We have a Uniform Bank. If any learner is in need, please contact Mrs O'Gorman.

TO SEEK SUPPORT WITH FOOD, SANITARY PRODUCTS OR UNIFORM, PLEASE EMAIL MRS O'GORMAN:

jacqueline.o'gorman@lyndon.org.uk

Cycling to School

We request parents and carers remind learners to take extra care when cycling to and from school.

Please also ensure that your child wears a suitable bike helmet when cycling to school.

Breakfast Club

Lyndon is part of the National School Breakfast Programme and offers learners a free toasted bagel before school every day. Breakfast is served every morning from 8.00 am in the canteen.

School Reception

Please note that Reception opening times are:

Monday, Wednesday, Thursday and Friday: 8.00 am - 4.30pm

Tuesday 8.00 am - 3.30 pm

Please ensure that learners are collected from school promptly.

Return Phone Calls

Please be reminded that all phone calls should be returned within one working day; thus **by the close of play on the day after the request is made.**



INFORMATION



Attendance and Punctuality at Lyndon School

At Lyndon, we believe that excellent attendance and punctuality are both important in helping our learners to achieve their full potential. As such, at Lyndon School our expectations are that all learners should be at school and on time every day the school is open unless the reason for absence is unavoidable.

To meet our statutory obligations and to ensure our learners benefit from consistent high quality learning Lyndon School will:

Promote perfect attendance and work closely with our families to ensure all learners attend school each day.

Act proactively to identify and address patterns of absence which may hamper a child's life chances.

Communicate regularly with our families to provide information regarding their child's attendance and the impact it is having on their progress at the academy.

Working in partnership with various agencies to support the work of Pastoral Managers, Attendance Officers, and the Education Welfare Service Remember, excellent attendance is key to your child being able to fulfil their potential and make good progress in school.

Improving attendance: What parents and carers can do?

One of the most important ways a parent or carer can support the personal and academic development of their child is to ensure they attend every day and on time. At Lyndon, we have a clear expectation that learners should aim for 100% attendance every year. We recognise however, that illness happens, children can become unwell and there will be occasions when your child is too poorly to come into school. The academy expects the support of parents and carers in ensuring that children always attend, when possible.

Please encourage your child to come to school even if they are feeling slightly unwell. Pastoral Managers will contact you if it becomes necessary for your child to go home however, creating an ethos of getting into school, prepares them for further education and the workplace.

Where a child is unwell, parents and carers should ensure they follow the 'Reporting' procedures below.

Reporting an absence

All absences must be reported to the Attendance Officer before the start of school by 8.30am, on the absence line, giving the reason for absence. If it is a prolonged absence a call is required each day.

Absences can be reported via the school absence line on 0121 743 3402 (option 1) or by email to office@lyndon.org.uk

If you know your child is going to be absent due to a medical appointment, please let us know in advance with evidence for the absence. In such instances, absences from school should be limited to the length of the appointment and travelling time.

Absence due to illness will be authorised unless there is a concern about the authenticity of the illness, in which case you may be asked to provide medical evidence. Unexplained absences will be unauthorised by the academy.

Examples of authorised absence

Medical or dental appointments. Routine appointments should be made for outside of school hours. Evidence of these appointments is required. The academy will only authorise a maximum of half a day's absence for unavoidable medical appointments (e.g. hospital consultant, CAMHS or orthodontist appointments).

College/employment interviews. Evidence is required.

Family funerals of close and immediate family members or recognised religious observations. (One day will be granted on prior notification).

For exceptional circumstances a Leave of Absence request form can be obtained from the school for completion. On receipt of this form the Principal will decide and write to you to confirm whether authorisation is granted.

Examples of unauthorised absence

- Unauthorised leave of absence
- A full day absence for a medical appointment
- Absence not reported on the day or supported by written explanation upon return to school
- Arriving late after the register has closed (9.30 am)
- Truancy: isolation will be given as a sanction

Examples of medical evidence

- Medical appointment card or photo with one appointment entered
- Letter from a professional
- Medical note
- Medication prescribed by a GP
- Copy of prescription
- Print screen of medical notes
- Letters concerning hospital appointments
- Slip with date, pupils name and surgery stamp, signed by Receptionist

Request for leave of absence during term time

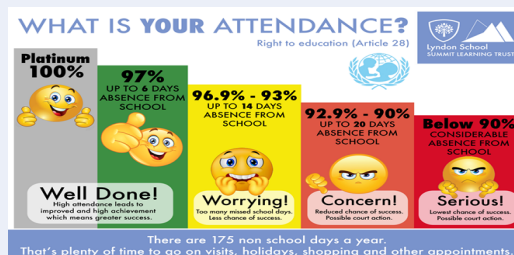
Parents/carers should not book holidays or similar arrangements during term time. It is unlawful for learners to be granted holidays during term time; therefore, the principal will be unable to authorise absences unless there are genuine exceptional circumstances.

Punctuality

We ask that learners arrive at the academy prior to 8.30am ready to attend tutor time at 8.40am. If your child is going to be late, please call the main office to inform them of the reason. The school gates close at 8.30am and should any learners arrive after this time, they must sign in at the 'late desk', located at the Upper School Gate entrance. If a learner arrives late, without a genuine reason, they will be issued with a 20-minute detention which will need to be sat at the end of the same school day. For learners who arrive after 9.30am, without a valid reason, they will be marked as a 'U' which is an unauthorised absence.

If you have any questions or concerns regarding attendance, please contact your child's Pastoral Manager who will be able to advise and support you as well as putting you in touch with other agencies should this be required.

Thank you for your continued support in helping to raise attendance, punctuality, attainment, and achievement at Lyndon School. If you are unsure of any of the details regarding attendance, a full Trust Attendance Policy can be viewed on our website.





Computational Thinking Challenge

UK Bebras 2023



Bebras Fortnight
6th-17th November 2023

GET INVOLVED

- Contact your school and ask your Computing / Maths / Science teacher to register on behalf of the school
- If you are a home school student then your parent can register as a coordinator.
- Bebras can be delivered in 50min slots within the timetable (Quiz time 40mins)
- Delivered online at school (or at home for home-schooled students)
- There is no need to transport the children off site
- Bebras is FREE to enter!
- No prior computing/programming/ICT knowledge is required

Age Groups

England and Wales:

Elite: Years 12 & 13
Seniors: Years 10 & 11
Inters: Years 8 & 9
Juniors: Years 6 & 7
Castors*: Years 4 & 5
Kits*: Years 2 & 3

Scotland:

Elite Years S5 & S6
Seniors: Years S3 & S4
Inters: S1 & S2
Juniors: Years P6 & P7
Castors*: Years P4 & P5
Kits*: Years P2 & P3

Northern Ireland:

Elite: Years 13 & 14
Seniors: Years 11 & 12
Inters: Years 9 & 10
Juniors: Years 7 & 8
Castors*: Years 5 & 6
Kits*: Years 3 & 4

* Castors and Kits can enter as individuals or small groups (up to 4)

Secret Messages

Agents Boris and Bertha communicate using secret messages.

Boris sends Bertha the secret message: MEETBILLYBEAVERAT6
He writes each character in a 4 column grid as shown on the right.
(He puts an X in any unused spaces.)

The secret message is created by reading from top to bottom and column by column starting from the left: MBYVTEIBE6ELERXTLAAX

Bertha then uses the same method to reply to Boris. The secret message she sends him is: OIERKLTIELH!WBEX

Question: What message does Bertha send back?

- A OKWHERETOMEET!
B OKIWILLBETHERE!
C WILLYOUBETHERETOO?
D OKIWILLMEETHIM!

M	E	E	T
B	I	L	L
Y	B	E	A
V	E	R	A
T	6	X	X



Find out more at: bebras.uk



All prospective students must be accompanied by a parent or other adult.



VISIT US AT AN OPEN EVENING

Wednesday 22 November or Monday 22 January

Both events: 5-8pm
Last entry: 7.00pm

Scan the QR code to book your place or visit solihullsfc.ac.uk/open-days

School Term Dates 2023—2024

Autumn Term 2023		INSET DAYS
Half Term	Monday 30 th October—Friday 3 rd November 2023	
		Friday 24 th November 2023
Term Ends	Friday 22 nd December 2023 Learners last day – Normal Finish Time	
Spring Term 2024		
Term Starts	Monday 8 th January 2024	Monday 8 th January 2024
	Tuesday 9 th January 2024	
Half Term	Monday 12 th – Friday 16 th February 2024	
Term Ends	Friday 22 nd March 2024 Learners last day – Normal Finish Time	
Summer Term 2024		
Term starts	Monday 8 th April 2024	
May Day	Monday 6 th May 2024	(Learners not in school)
Half Term	Monday 27 th May – Friday 31 st May 2024	
		Friday 5 th July 2024
Term Ends	Friday 19 th July 2024 Learners last day – Normal Finish Time	

Key Dates 2023—2024

14th November, 2023	Year 10 Progress Evening
5th December 2023	Year 9 Options Evening
16th January 2024	Year 9 Progress Evening
24th & 25th January 2024	Year 9 MEN/DTP Vaccinations
6th February 2024	Year 11 Progress Evening
16th April 2024	Year 8 Progress Evening
6th & 7th June 2024	Year 8 HPV Vaccinations