

# Uniform at Lyndon School



- Black blazer with school badge embroidered on.
- Plain white collared shirt.
- School tie.
- Black school trousers of a professional style. Loose, not fitted, drainpipe or turn up and of a suitable material (not denim, lycra, corduroy, jeans or chinos). Learners who wear trousers must not have their lower leg or ankles exposed.
- Skirt; bottle green, knee length, box pleated from the waistband. The skirt must be knee length, if the skirt does not reach the knee then the Learner will need to purchase trousers. Old skirts with the Lyndon badge are no longer allowed. **Skirts can only be purchased from our suppliers.**
- Neutral/Black tights only or black socks to be worn below the knee.
- Formal, black shoes with plain black socks.

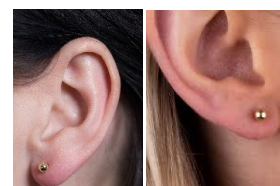
**NO TRAINERS OR SPORTS BRANDS. Shoes must be of a solid, robust and traditional style. Shoes need to be suitable for a formal environment like an office or an interview. See examples in this booklet. Polishable trainers, trainer style shoes, sport branded shoes, boots and canvas shoes will not be permitted.**

**Please note: some trainers are sold in the school shoes section in some stores; this does not necessarily make them permissible. Shoes must follow the school regulations.**

**Please see additional footwear guidance.**



OPTIONAL
School black 'V' neck pullover or cardigan.
OUTDOOR WEAR (when needed in addition to the blazer)
Plain/dark outdoor coat, no fur, denim, leather look, hoodies, body warmers, sweatshirts or other leisure type/sport or shirt garments are not allowed.
RELIGIOUS CLOTHING
Religious headwear such as hijabs, headscarves and turbans should be plain and black in colour.
HAIR BANDS
Black and plain in design and no more than 1cm wide.
JEWELLERY
No item should pose a health and safety risk. A watch and a single small round, plain gold or silver stud type earring, not diamante or pearl, to be worn in each ear lobe only. Please see picture of acceptable earrings. Rings, bracelets, hooped earrings and other visible loose-fitting items are not allowed. No other visible body piercing studs (not even covered by tape). Nose rings and tongue piercings are not allowed - clear spacers are NOT allowed.



HAIRCUTS
Learners must not wear extreme haircuts to school. Undercuts, shaved hair, tramlines or inappropriate hair colours are not permitted. Hair should be natural tone in colour. Final decisions about suitability will be made by the Principal or Vice Principals.
MAKE UP
Learners to refrain from wearing excessive make-up in school (including false eyelashes, painted or false nails or fake tan).
HATS/ SCARVES/ GLOVES
At the Principal's discretion in cold weather. No caps to be allowed at any time. No headwear, scarves or gloves should be worn inside the school buildings and scarves should only be worn with coats; fashion scarves/ shawls are not permitted to be worn on top of blazers. Any items that cover the face are prohibited e.g., snoods or face masks.
SCHOOL BAGS
These should be brought to school DAILY. They must be of an A4 size to carry a planner and exercise books, pencil cases and any other equipment necessary for lessons. Small handbag/pouches styles are PROHIBITED.
EQUIPMENT
All Learners are expected to bring the following equipment in a pencil case to each lesson: <b>Black pen   Pencil   Ruler   Sharpener   Eraser   Highlighters   Green pen   Reading book   School planner   Scientific calculator (Casio fx-85GT-X Solar)</b>
IF IN DOUBT
<p>If in doubt of any uniform items, please obtain approval. Your child's Pastoral Manager will be pleased to confirm if they are suitable or not. Where there is doubt over the suitability of any article of clothing, the Principal or Vice Principals will make the final decision.</p> <p>Any item of jewellery or clothing that is not on the approved uniform list is prohibited e.g. pouches, tracksuit tops, hoodies, leisure garments, and as such will be confiscated from Learners. Whilst every care will be taken to secure prohibited items that have been confiscated, no responsibility will be taken by Lyndon School or the Summit Learning Trust resulting in damage or loss to any items that have been confiscated. Prohibited items must not be brought into school.</p>
ELECTRONIC DEVICES
<p>Mobile phones, electronic and connectable devices, including smart watches, should not be visible in school. Whilst we understand that Learners may choose to bring such devices to school, they must not be used or seen on site at any time. If these items are visible, they will be confiscated. All items should be switched off and secured in pockets or bags.</p> <p>Items that are confiscated will be secured in reception to be collected by <b>parents only</b> at the end of the school day. Therefore, please talk to your child about the consequences if they have an item confiscated. Reception closes Monday - Thursday at 4.00pm and Friday at 4.00pm. Any items not collected by the end of the day will be stored securely.</p>
PHYSICAL EDUCATION/DANCE KIT
<ul style="list-style-type: none"> <li>● Falcon White/Black polo shirt with Lyndon logo (indoor/summer lessons)</li> <li>● Aptus Black ¼ zip top with Lyndon logo (outdoor lessons)</li> <li>● Plain black sport shorts (no logo, not cycling shorts)</li> <li>● Black skort with Lyndon logo or plain black tracksuit bottoms</li> <li>● Plain black football socks (winter and outdoor lessons)</li> <li>● White sports socks (indoor/summer lessons)</li> <li>● Football boots with non metal studs (winter field based lessons)</li> <li>● Sports Trainers (indoor/summer lessons)</li> <li>● <i>Optional</i>- black base layers to be worn under PE kit (for outdoor winter lessons)</li> </ul>

At Lyndon school, we have high expectations for all of our learners and insist on perfect uniform at all times.

Please contact your child's Pastoral Manager should you wish to enquire about second hand uniform.

# FOOTWEAR GUIDELINES

## FOOTWEAR GUIDELINES



All of the above are examples of permitted shoes for the 2022/23 academic year.  
Other appropriate styles are available. All shoes MUST be plain black, polishable leather/leather effect.



**Not permitted:** - Air bubbles - Colourful tabs/labels/branding - Material/fabric/mesh/suede upper  
- Coloured trim/soles/outlines of branding - Boots - High heels - Running trainers

## SCHOOL UNIFORM SUPPLIERS

**CLIVE MARK  
SCHOOLWEAR**  
2286 Coventry Road  
Birmingham  
B26 3JR  
0121 722 2286

**MIDLAND  
SCHOOLWEAR**  
1160 Warwick Road  
Acocks Green  
Birmingham  
B27 6BP  
0121 707 2033

**MANSURI  
SCHOOLWEAR  
& SPORTS WEAR**  
163 Yew Tree Lane  
Yardley, Birmingham  
B26 1AY  
0121 784 4230

**MANSURI  
SCHOOLWEAR  
& SPORTS WEAR**  
754-756 Stratford Road,  
Sparkhill, Birmingham  
B11 4ER  
0121 778 2787

